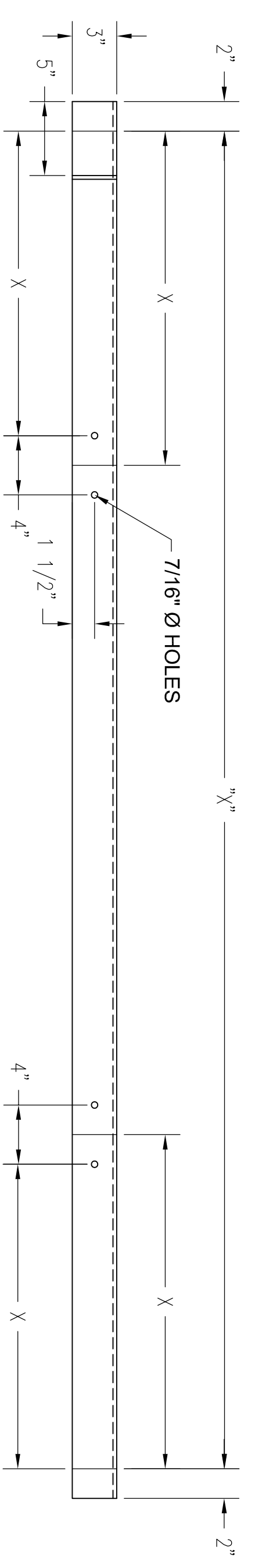
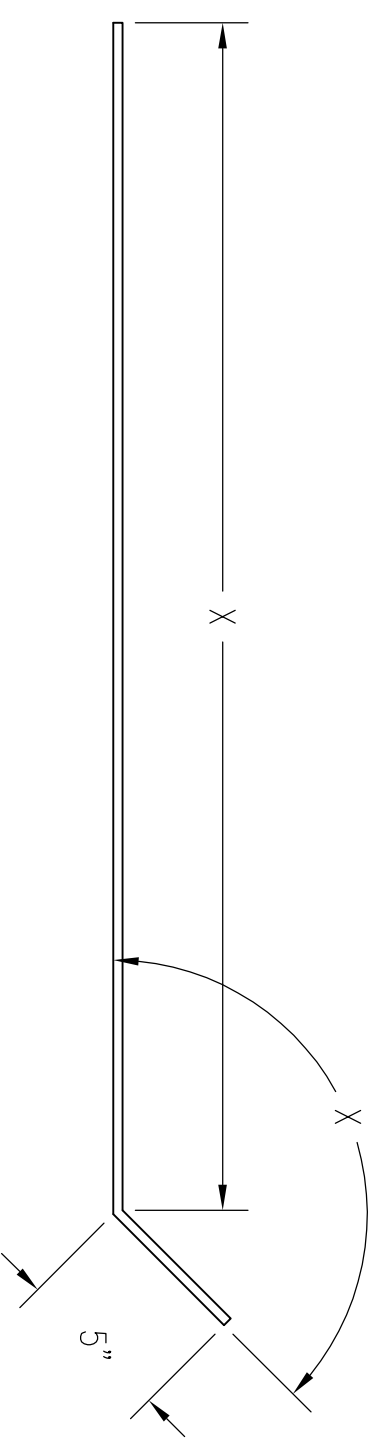


QUANTITY AND CONFIG. OF EMBEDDED STEEL TO BE DETERMINED PER PROJECT

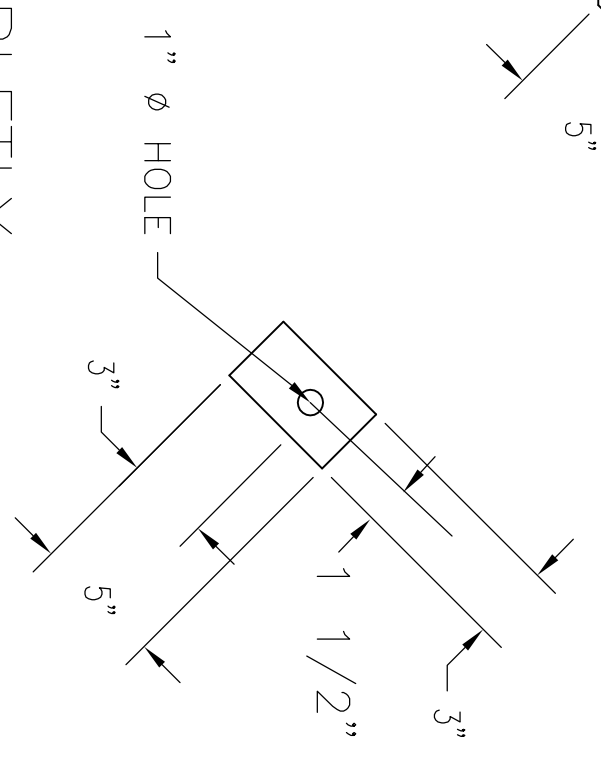
DENSITY BAFFLE



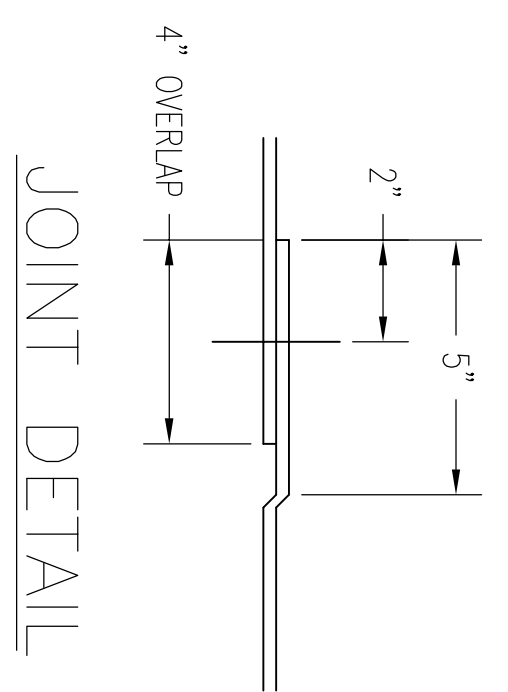
3" FRP FLANGE - ELEV VIEW



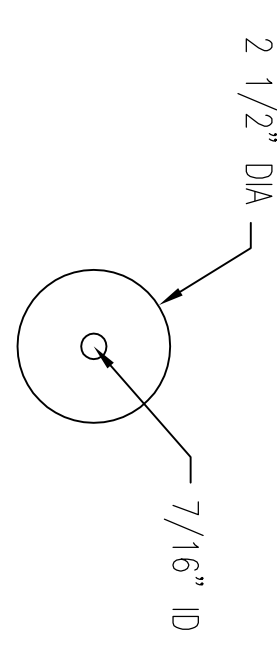
EMBEDDED STEEL DETAIL



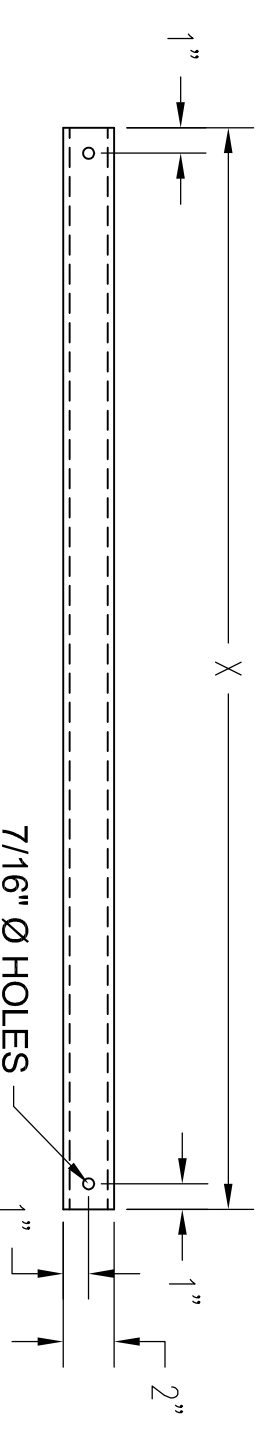
NOTE: STEEL BENT BAR TO BE COMPLETELY ENCAPSULATED IN FIBERGLASS



JOINT DETAIL

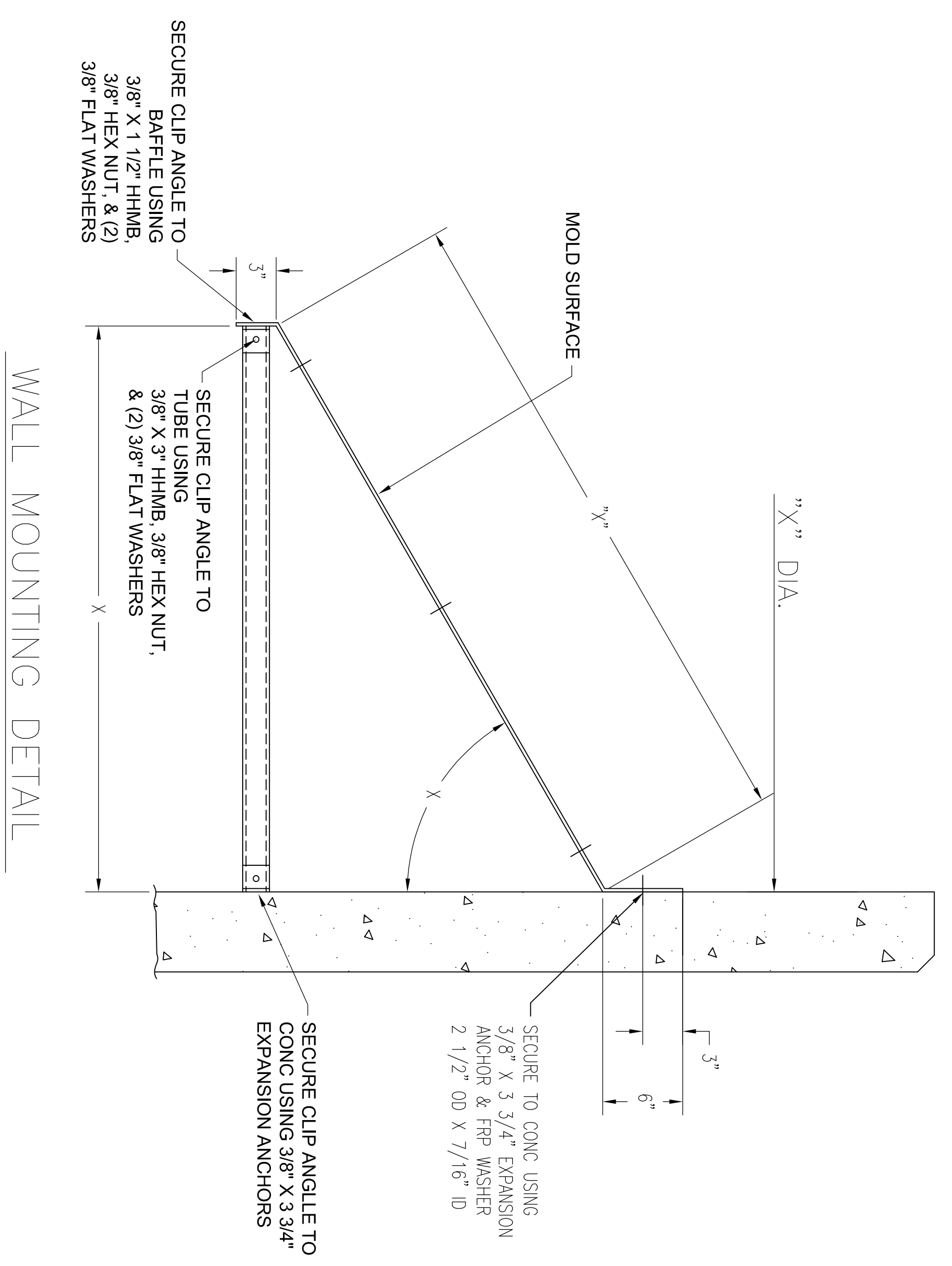


FRP WASHER

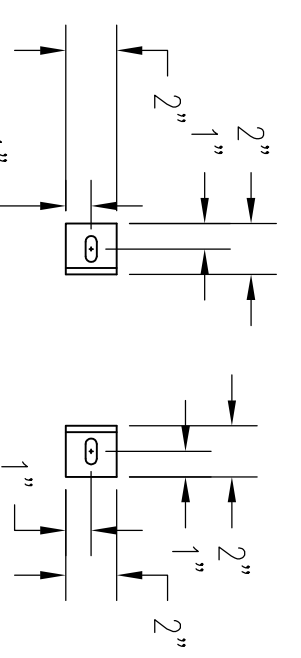


FRP TUBE SUPPORT

2" X 1/4" X "X"



WALL MOUNTING DETAIL



FRP CLIP ANGLE

2" X 2" X 1/4" X 2" 7/16" X 1" SLOTS

MFG WATER TREATMENT ("WATRE") has no responsibility for the contract design of the product or the contract specifications. WATRE has been selected to manufacture this product, the customer agrees to indemnify and hold WATRE harmless from and against all liability relating to this product, its performance, merchantability and fitness for purpose (including all liability for claims, suits, judgments and expenses), unless the product as manufactured by WATRE does not conform to the contract design and specifications set or WATRE'S shop drawings approved by the customer.

Density Baffle

NO.	REVISIONS	DATE

MFG CONSTRUCTION & WATER PRODUCTS
 55 4th AVENUE UNION CITY, PA 16438 PHONE: (814) 438.3959 FAX: (814) 438.8538
 SCALE: TITLE: Density Baffle Details For Baffles with a face depth exceeding 48"
 REF.

DIVISION : MFG/WTP
DRAWN BY : CS
CHECKED BY :
APPROVED :
DATE : 1/4/17

SHEET NO. 'X'
